

# DROGHEDA CITY GUIDE

Explore Ireland's Hidden Gem

Nestled between Dublin and Belfast, Drogheda retains a lovely medieval small-town atmosphere but it still has plenty to see and do.



## HISTORICAL PLACES TO VISIT

### 1. Newgrange

*Newgrange, Donore, Co. Meath*

<https://worldheritageireland.ie/>

A UNESCO World Heritage site where you can visit the 5,200 years Stone Age Monument (older than the Great Pyramids of Giza).

### 2. Slane Castle

*Slanecastle Demesne, Slane, Co. Meath*

<https://www.slane castle.ie/>

Located in a small village built in the late 15th century, Slane Castle hosts all kinds of exciting festivals.

### 3. Battle of the Boyne

*Visitor Centre, Drogheda, Co. Meath*

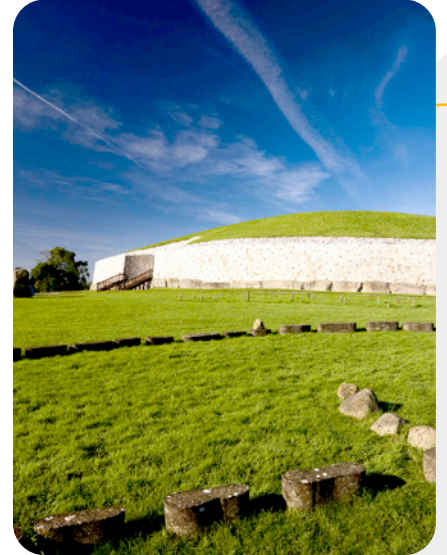
<http://www.battleoftheboyne.ie/>

Located in the 18th century Oldbridge House, you'll learn about one of the most important battles in Irish history.

### 4. Monasterboice

*Bawntaaffe, Monasterboice, Co. Louth*

A set of ruins containing a graveyard, best known for its High Crosses with engravings depicting stories from the Old and New Testaments.



## BEACHES, FORESTS AND RIVERS

### Beaches

*Various locations*

Only a 15-20 min bus ride from the Town Centre, you can enjoy walks along the beach at Bettystown, Clogherhead, Laytown or Mornington.

### Boyne Boats

*The Lock House, Drogheda, Co. Meath*

A tour along the River Boyne and Boyne Canal, combining historical facts, myths, legends and Game of Thrones trivia.

### Saint Dominic's Park

*Drogheda, Co. Louth*

Four walks along the river Boyne (all the way up to the Battle of the Boyne Visitor Centre), outdoor activities, playground, skate park and picnic site.

### Boyne Valley Camino

*Drogheda, Co. Louth*

Part of the Celtic Camino Series, great for hiking, running and walking. A 5h 50 min guided loop trail from St. Peters Church to Mellifont Abbey.

### Townley Hall Wood

*Tullyallen, Co. Louth*

A gorgeous woodland offering the opportunity for invigorating walks in beautiful natural surroundings.

## TOP 5 PLACES TO EAT

### 1. Courtyard

Merchant's Quay, East Drogheda

Good for sandwiches, wraps, pastries, iced/hot drinks. Student deals. Beside ELI.

### 2. Five Good Things Cafe

36 St Laurence St, Lagavooren

Brunch, pastries, coffee, paninis, open space. Average prices.

### 3. Casanova Italian and Mediterranean Restaurant

The Mall Apartments, 2 N Quay

Italian and Mediterranean Restaurant: pizza, pasta. Student deals. Close to ELI Schools.

### 4. Blackbull

Dublin Rd, Wheaton Hall

Gastropub: vegan options, big screen for sports.

### 5. Song & Jenn's Kitchen

1-2, 1-2 Cord Rd, East Drogheda

If you enjoy Korean food, this is the place for you! Additionally, special discounts are offered for ELI students.



## TOP PLACES TO PARTY

### 1. Old Mollies

### 2. The Earth

### 3. Fusion



## TOP PUBS TO GO FOR A PINT

### 1. Cagney's Bar

### 2. The Grey Goose

### 3. Weaver's Bar & Venue

### 4. 79 West Street

## BEST PLACES TO SHOP



### Groceries

Dunnes Stores, Tesco, Tesco Extra, Marks and Spencer, Lidl, Centra, Spar, Aldi and Mace.



### Budget Shops

Dealz, Boyd's, Eurogiant, Mr. Price  
For: Adaptors, gadgets, house accessories, paper/notebooks, pens and pencils, etc.



### Clothes

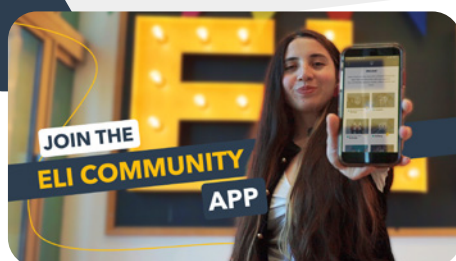
€ Tesco Extra - Clothes

€ Charity/vintage shops – second hand clothes, shoes, books, furniture.

€ - €€ Penneys – Clothes, shoes, accessories, bed and bath.

€ - €€ Dunnes - Clothes, shoes, accessories, bed and bath.

€ - €€€ TK Max – Clothes (some designer), shoes and accessories.



Discover more on your  
ELI Community App



**ELI** ENGLISH LANGUAGE INSTITUTE

### Contact us

✉ hello@elischools.com

☎ +353 1 55 98 717

### Follow us

▶ /ELISchools

📷 @elischools

f /ELISchools

🎵 @elischools\_ireland